

CCGA NEWS



The Newsletter of the Colonial Coverlet Guild of America

First Quarter 2015



Some Geometric Coverlets *by Ron Walter*



Red, Blue and Yellow all Wool Plain Weave Geometric Coverlet
ex. Barbara and Lester Breininger collection

On the Inside

Presidents' Corner
Page 2

Save the Date for the 91st
CCGA Annual Meeting
Page 2

Williams Brothers Fancy
Weavers
Page 6

Geometric coverlets are an interesting area of coverlet collecting. Some collectors enjoy collecting only fancy coverlets, some collect only geometric coverlets and others enjoy collecting both types of coverlets. Many enjoy the technical detail of the weave structure and how one could be woven today while others just enjoy the beauty of the coverlet.

The plain weave coverlets are often woven with all

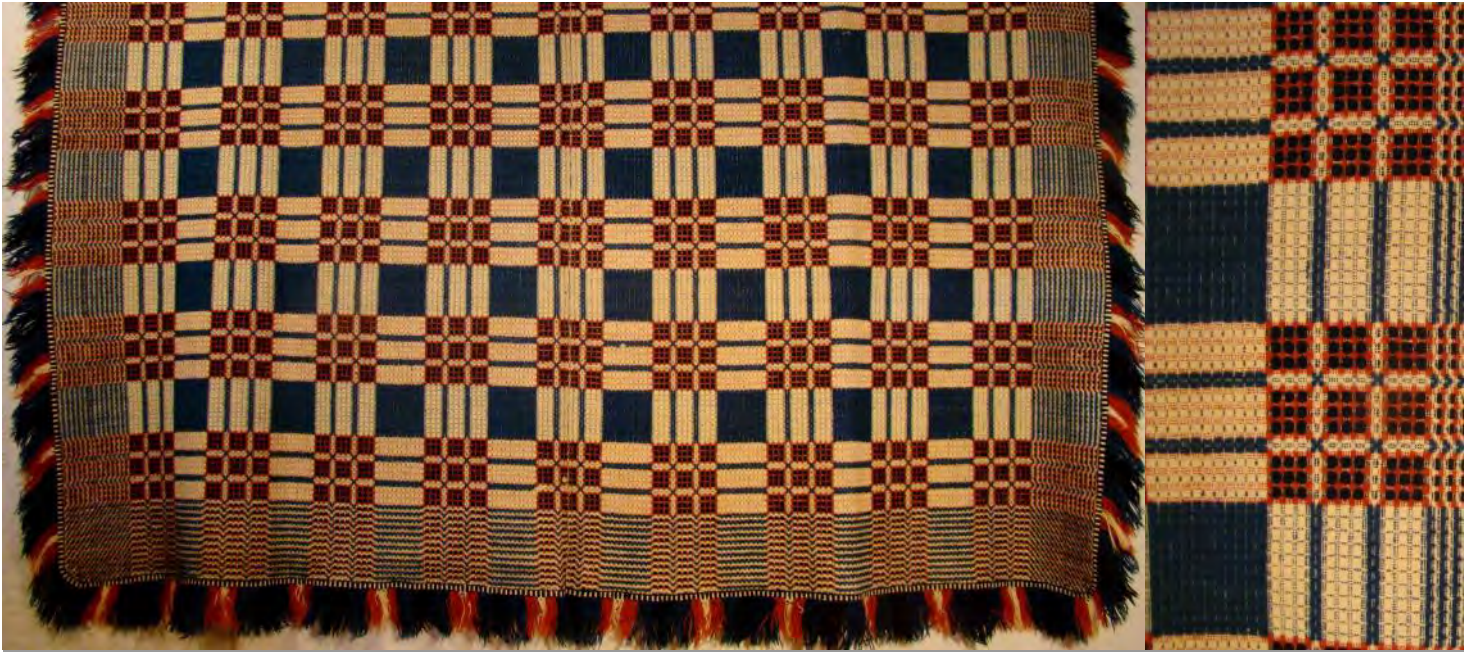
wool warp and weft of several colors forming an interesting pattern. The double weave coverlets are usually woven with one plain weave layer being cotton and the other plain weave layer being wool. The layers interchange at the color boundaries. This blue and white double weave coverlet has a pine tree border and applied fringe on three sides.

continued on page 3



Blue and White Double Weave Coverlet with Pine Tree Border

Some Geometric Coverlets *continued from page 1*

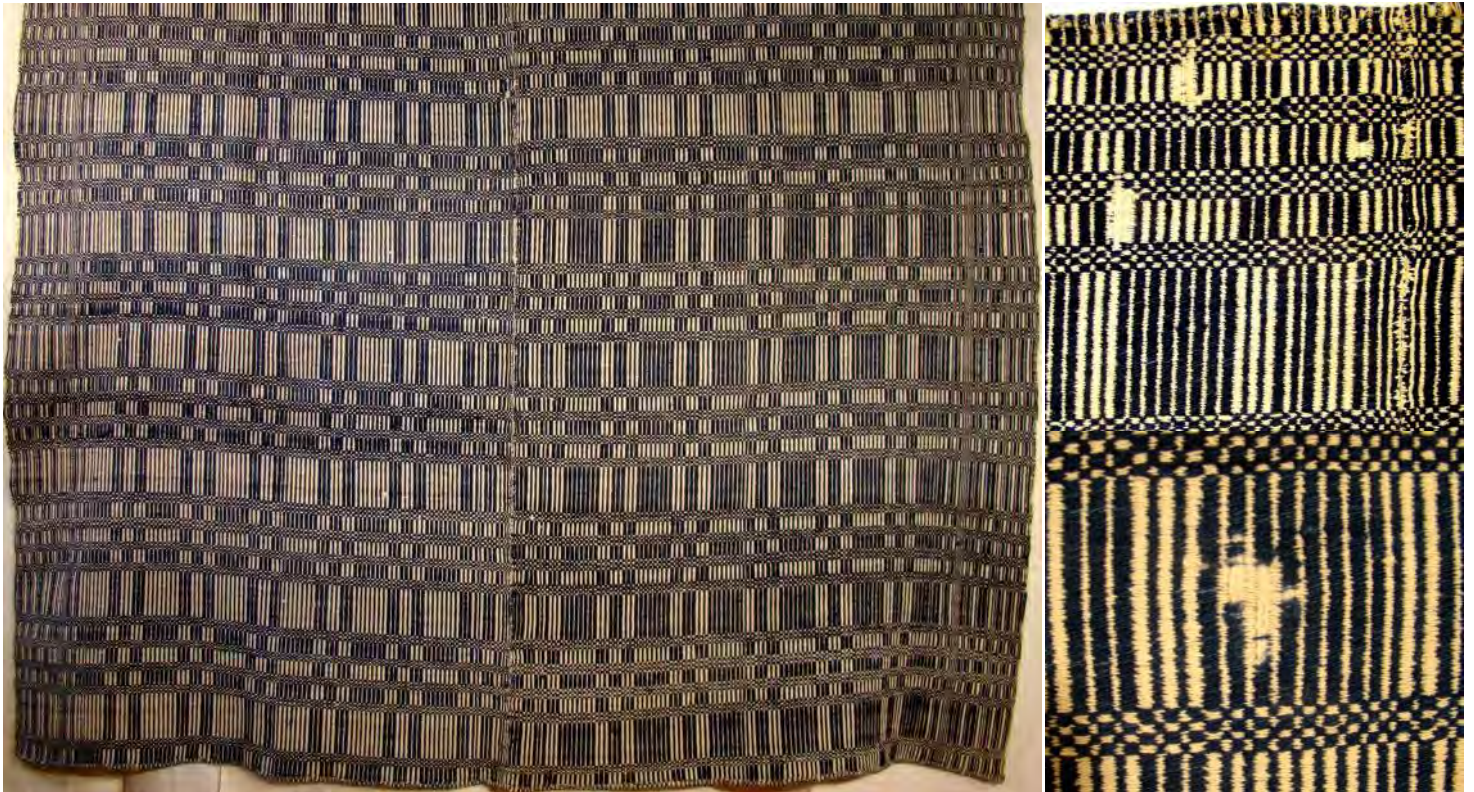


Red, Blue and White Overshot Coverlet with Large Pattern Repeat

The overshoot coverlet is named for the pattern wool weft skipping over several cotton warp ends. This overshoot coverlet has an unusually large pattern field repeat and a large border area. The blue and white weft faced coverlet is woven such that only the weft is visible.

In the right half of this coverlet you will see that the weaver switched part way through the weaving from weaving the white dominate side to the dark blue dominate side and continued weaving the dark blue side to the end of the half.

continued on page 4



Blue and White Weft Faced Coverlet with Error on Right Half - Details show Weft Narrow Bands pass over One Warp and Weft Wide Bands pass over Three Warps

Some Geometric Coverlets *continued from page 3*



Red, Gold and White Summer Winter Weave Structure Coverlet with Pine Tree Border

The summer winter coverlet is named for the weave structure, not the fact it has a light and dark side. When examined close up this weave structure looks like a brick wall. It is unusual to see a summer winter coverlet with a border and woven with red and gold dyed wool weft. Most summer winter coverlets are either blue and white or red and white.

The geometric tied Beiderwand weave structure coverlet with pine tree border is woven with red, blue and green dyed wool weft. Note the weaver ran out of the lighter green dyed wool and finished weaving the right half with a darker green dyed wool.

continued on next page



Red, Blue, Green and White Tied Beiderwand Weave Structure Coverlet with Pine Tree Border

SOME GOMETRIC COVERLETS *continued from page 4*



Red, Blue and White Twill Coverlet

The twill coverlet can be recognized by the diagonal lines that can be seen when examining the coverlet close up. The diagonal lines are formed by the weave structure.

This complex weave coverlet appears as black and white bands of star work stars separated by a red and white band of overshot tables. The coverlet has an applied red wool fringe.



Red, Black and White Complex Weave Coverlet with Pine Tree Border

CCGA NEWS



The Newsletter of the Colonial Coverlet Guild of America

Second Quarter 2015

SOME GEOMETRIC COVERLETS continued

by Ron Walter



On the Inside

Presidents' Corner
Page 2

91st CCGA Annual Meeting
May 30, 2015
Page 2

Congratulations to Harold
Mailand
Page 3

Fliehr and Boettger Fancy
Weavers
Page 6



Blue and White Gebrochen Weave Coverlet

Red, Blue and White Gebrochen Weave Remnant

A blue and white gebrochen coverlet and a red, blue and white gebrochen coverlet remnant are shown above. Gebrochen is the German term for broken and is used by the German linen weavers to denote a broken twill. These twills are seen in drafts in German linen books from the early 17th century and are found in Pennsylvania German manuscripts from the 19th century and would be used for linen or coverlet weaving.

A red, blue and white coverlet with a pine tree border woven in gebrochen and block twill is shown below. This weave was called gesteinte and gebrochene (block and broken) by the German weavers but is called a "combination" weave by the PA German weavers. A similar coverlet is shown on page 207, Volume 2 of *The Coverlet Book* by Helene Bress. Thanks to Gay McGeary for help in describing these coverlets. *continued on page 3*



Red, Blue and White Coverlet with Pine Tree Border Woven in Gebrochen and Block Twill

SOME GEOMETRIC COVERLETS *continued from page 1*



Red, Dark Blue, Green and White Point Twill Coverlet with Four Stars and Rose Pattern and Double Pine Tree Border

A red, dark blue, green and white point twill coverlet woven in a four stars and rose pattern with a double pine tree border is shown above. This coverlet uses a lot more green wool filling than usual. Many of the Pennsyl-

vania German coverlets predominately use more red, dark blue and light blue than green, perhaps because to dye the green required more labor for the two step dyeing process.

continued on page 4

SOME GEOMETRIC COVERLETS *continued from page 3*



Red, Dark Blue, Light Blue and White Star Work Star and Blossom Pattern Coverlet

A red, dark blue, light blue and white star work coverlet woven in a star and blossom pattern is shown above. The weaver's sparing use of the light blue filling to highlight the center of the stars and blossoms adds to the beauty of this coverlet.

A red, blue and white star work coverlet woven in a star and bar pattern with smaller eight pointed stars inside the larger sixteen pointed stars is shown below. The close-ups show the detail of the weave structure.

continued on next page



Red, Blue and White Star Work Star and Bar Pattern Coverlet

SOME GEOMETRIC COVERLETS *continued from page 4*



Red, Blue and White Point Twill Coverlet in a Star and Small Diamond Pattern with Double Pine Tree Border

A red, blue and white point twill coverlet woven in a star and small diamond pattern with double pine tree borders is shown above. The small pattern repeat makes the pine tree border look more like a forest.

pattern with an inner pine tree border and an unusual outer border similar to the pattern is shown below. See a similar coverlet, coverlet F-20 on page 141 of *American Star Work Coverlets* by Judith Gordon.

A red, blue and white star work coverlet woven in a four tulips



Red, Blue and White Star Work Four Tulips Pattern with Pine Tree Border